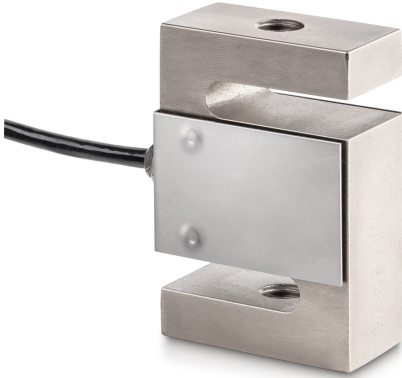


KERN CS 100-3P1

KERN

4-wire "S" measuring cell made of nickel-plated steel for force and mass measurement



Approval

CE mark ✓

Construction

Design	"S" shaped cell
Dimension (W×D×H)	50,8×76,2×20,8 mm
Material	steel, nickel-plated
Cable length	3 m
Mounting - force application	Threaded hole M10
Mounting - force dissipation	Threaded hole M10

Functions

IP protection - complete device IP67

Environmental conditions

Use temperature [Min]	-10 °C
Use temperature [Max]	40 °C
Ambient temperature [Min]	-35 °C
Ambient temperature [Max]	65 °C
Storage temperature [Min]	-40 °C
Storage temperature [Max]	70 °C

Packing & Shipping

Readability force [d] (N)	1 d
Dimensions packaging (W×D×H)	185×155×60 mm
Net weight	0,58 kg
Shipping method	Parcel service
Net weight approx.	0,60 kg
Gross weight approx.	0,70 kg
Shipping weight	0,685 kg

Services (optional)

Article number for DAkKS calibration (tensile force)	963-162V
Article number for DAkKS calibration (compressive force)	963-262V
Article number for DAkKS calibration (tensile force/ compressive force)	963-362V

Category

Brand	Sauter
Product category	Measuring cell
Product group	Load/force measuring cell
Product family	CS P1

Measuring System

Weighing capacity [Max]	100 kg
Load cell connection	4-wire
Load cell OIML class	C3
Load cell - Resolution (verifiable)	3000 e
Load cell - characteristic value - nominal	2 mV/V
Load cell - Y-value	10000
Load cell - Combined error	0,02%
Load cell - Dead load [Min] (%)	0%
Measuring applications	force mass
Load cell - Input resistance - nominal	350 Ω
Load cell - Output resistance - nominal	351 Ω
Load cell - Isolation resistance - [Min]	500 MΩ
Load cell - Recommended excitation voltage [Min]	5 V
Load cell - Recommended excitation voltage [Max]	12 V
Measuring range force [Max] (N)	1 kN
Directions of force	tension compression

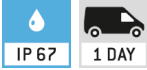
KERN CS 100-3P1



4-wire "S" measuring cell made of nickel-plated steel for force and mass measurement

Pictograms

STANDARD



OPTION

